

Opal

Technische Daten

Technical data

Herstellungsart:
Manufacturing process:

Tuft

Tuft

Oberflächenstruktur:
Surface aspect:

Teilung 5/64

Cut Pile 5/64

Rückenausrüstung:
Backing:

Action back

Action back

Polmaterial:
Pile material:

100 % Polyamid

100 % Polyamide

Gesamtgewicht:
Total weight

1265 g/m² +/- 10%

1265 g/m² +/- 10%

Rollenlänge:
Roll length:

ca. 30 lfd. m

ca. 30 m / roll

Breite:
Width:

200 cm

200 cm

Farben:
Colours:

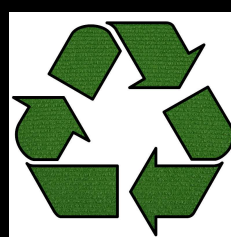
9

9

Verlegung:
Installation:

auf doppelseitigem Klebeband

with a double-sided tape



Farbpalette / Colors

22102 rot / red

22105 metall / metal

22106 natur / nature

22110 weiß / white

22165 hellgrau / light grey

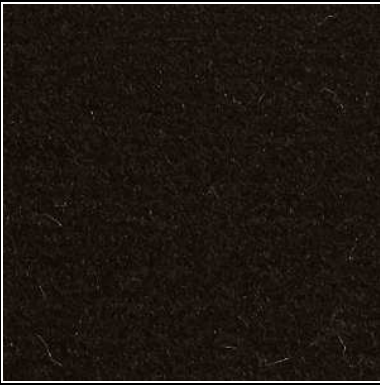
22120 schwarz / black

22145 anthrazit/ anthrazit

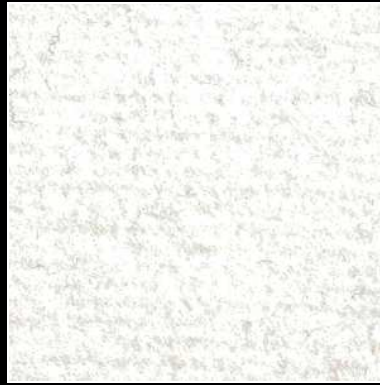
22174 tinte / royal

22194 marine / marine

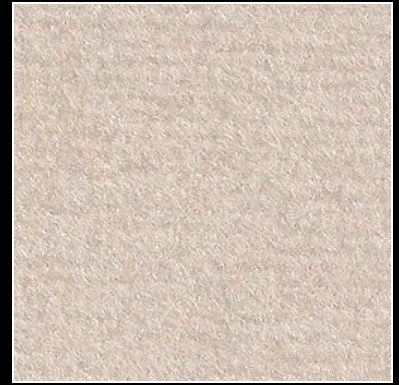
Produktionsbedingte Farbabweichungen möglich !!!! Colour deviations possible !!!!



22120 schwarz / **black**



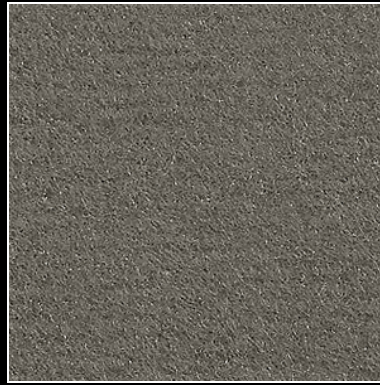
22110 weiß / **white**



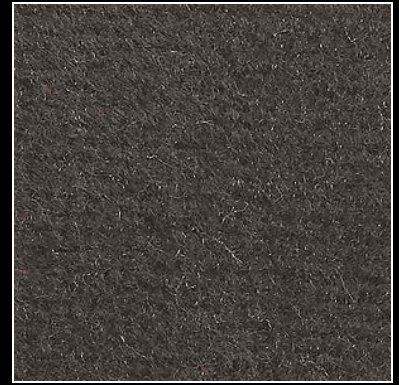
22106 natur / **nature**



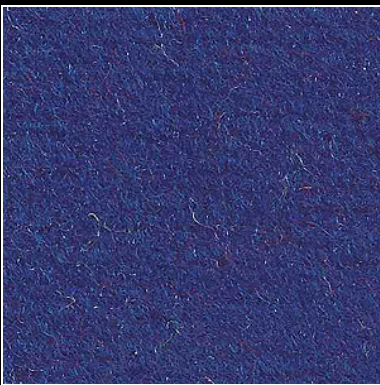
22165 hellgrau / **light grey**



22105 metall / **metal**



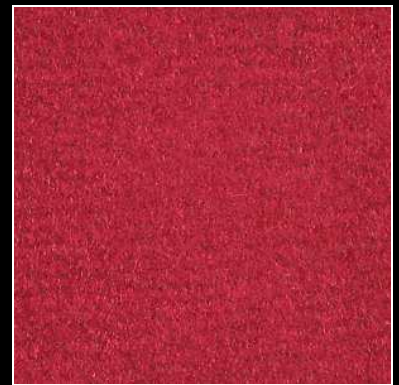
22145 anthrazit / **anthrazit**



22174 tinte / **royal**



22194 marine / **marine**



22102 rot / **red**